

make your future


Full-time MBA

early
makers

em
lyon
business
school

LYON . SHANGHAI . SAINT-ETIENNE . CASABLANCA . PARIS . BHUBANESWAR



A woman's profile is shown in silhouette on the left side of the frame, looking out over a city skyline. The sky is a soft, hazy orange, suggesting dawn or dusk. The buildings in the background are also in silhouette, with some windows catching the light. The overall mood is contemplative and aspirational.

I wake up early.
I capture a thousand
ideas, shake and share them,
focus and turn good ones
into opportunities.
I move forward to make it
happen, try, fail, do it again,
make it work and improve it
with the help of others.

I am a maker.
I am an **early maker.**

Live your MBA experience through our early maker philosophy

INSPIRE

- Explore the future of disruptive societal, technological, and political changes
- Borrow best practices from other industries and contexts
- Build a global mindset & multicultural sensitivity

MAKE

- Put key concepts into action and experiment using real life corporate & entrepreneurial projects
- Innovate to tackle complex social and technological changes
- Deploy collaborative solutions that make critical trade-offs

REFLECT

- Increase your self-awareness through reflexivity and self-examination
- Develop resilience and project your own unique leadership profile
- Enable others to reach their full potential

MASTER

- Develop deep competencies in a range of business disciplines
- Explore new and alternative business models
- Integrate the latest transformative business thinking

Why choose our MBA ?

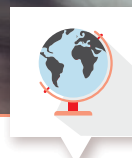
1



Join a diverse group of talented individuals

Every year the small cohort is filled with a variety of participants from different nationalities and professional backgrounds

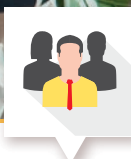
2



Become a global leader

Gain a more global vision of business issues and managerial decisions through dedicated courses and international learning trips

3



Be ready to move towards higher strategic & decision-making positions

With action learning projects and leadership development, you will be prepared to take on more challenging professional positions

4



Tailor the program to your individual professional goals

A variety of specializations and your chosen 6-month consultancy project will allow you to direct your CV into the direction you wish to take

5



Challenge yourself and discover your true professional motivation

Through dedicated careers coaching and leadership development courses, pave the way for your ongoing personal growth and career development

6



Study in Lyon, the heart of France

Lyon is situated in the 2nd largest urban area of France and is a rapidly economically expanding city



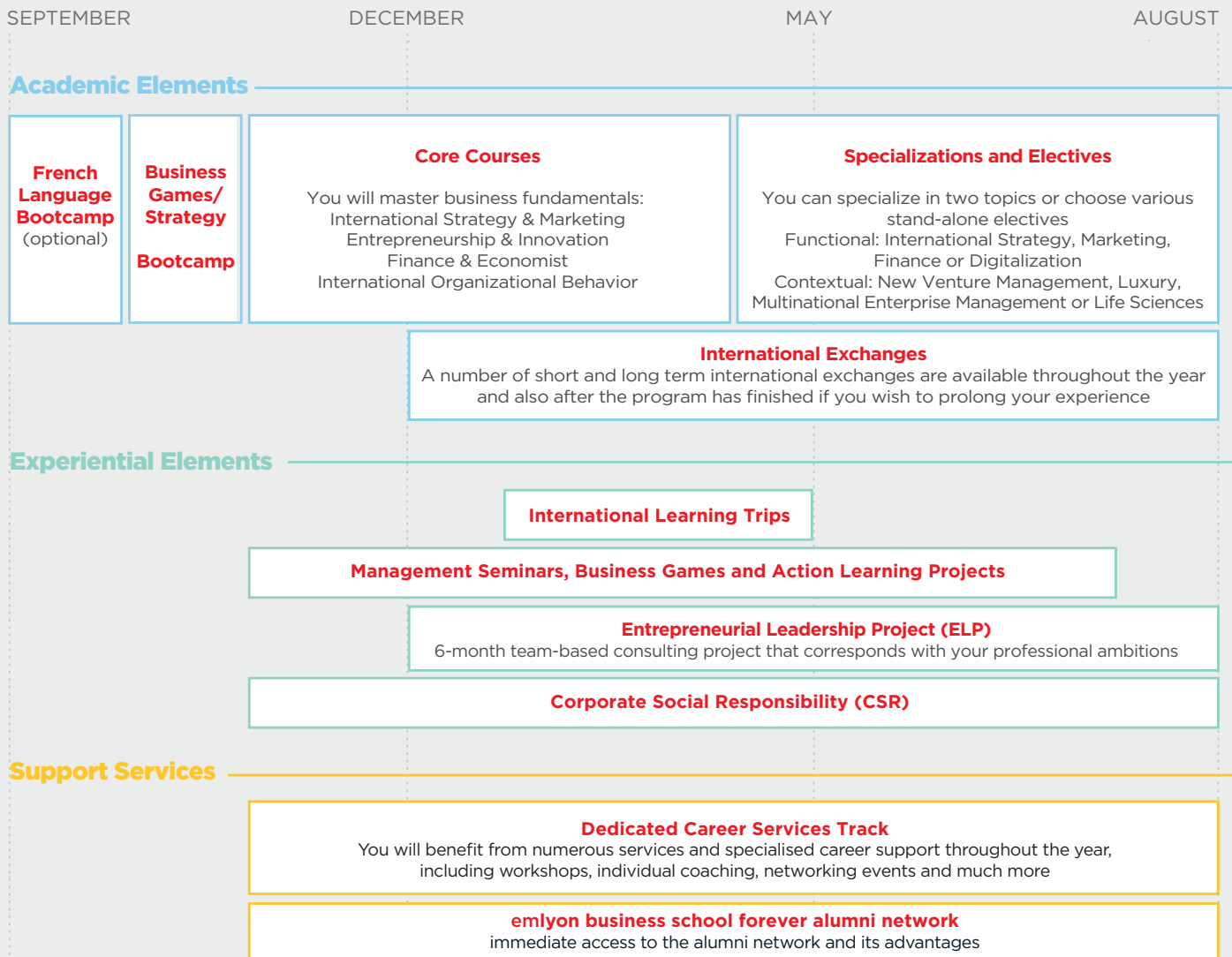
—
**full-time
MBA**

Based in Lyon for young professionals, this intensive 12-month MBA offers a true transformational experience.

Program architecture

With our MBA, you will be ready to change roles, sector, or take control of your own business. You will hold the key to position your career on the only path that is worthwhile. Yours.

Rhoda Davidson // MBA Director



Core courses

The core courses cover the fundamental topics that you will need to master in order to be a successful manager or entrepreneur in any sector around the world. Working with innovative and experienced professors as well as external speakers, you will approach each subject from different cultural and professional view points, as well as be asked to share your experiences from your professional context. By completing this initial part of the program you will gain all the essential building blocks you need to continue with your personal electives.



Spezialisations

Elective Courses

In the second half of the program, you have the unique opportunity to develop your own MBA in conjunction with the professional path you wish to take.

You can choose to specialize in up to 2 topics

Choose one functional topic

International Strategy

- International Strategy
- Corporate Governance
- Business Transformation Change Management
- Merger & Acquisitions
- Strategic Challenge of Disruptive Innovation

Marketing

- Business-to-Business Marketing
- Marketing of Innovation
- Competing Through Services
- Two Luxury course to be chosen among the list:
 - Foundation of Luxury Management
 - Consumer Behavior
 - Brand Management

Finance

- Multinational Enterprise (MNE) Financing Strategy and Corporate control
- Entrepreneurial Finance
- Cost for Decision
- Performance Measurement
- Corporate Governance

Digitalisation

- Big Data & Social Media Analytics
- Blockchain for Entrepreneurs
- Digital Marketing
- Disruptive Information Technology
- Growth Strategy in the Age of Digital Disruption
- Strategic Challenge of Disruptive Innovation



Choose one contextual topic

New Venture Management

- Entrepreneurial Finance
- Marketing of Innovation
- Corporate entrepreneurship
- Business Plan Development
- Strategic Challenge of Disruptive Innovation

Luxury

- Foundation of Luxury Management
- Consumer Behaviour
- Brand Management
- Competing Through Services
- Marketing of Innovation

Multinational Enterprise Management

- Business-to-Business Marketing
- Implementing International Strategy
- MNE Financing Strategy and Corporate Control
- Corporate Entrepreneurship
- Strategic Challenge of Disruptive Innovation

Life Sciences

- Business-to-Business Marketing
- Economics of Bio-Pharmaceutical Industry (mandatory)
- Perspectives in Life Science Businesses
- Two courses to be chosen:
 - Entrepreneurial Finance
 - Intellectual Property Law at the international level
 - Corporate Entrepreneurship

You can choose between 10 - 12 electives. To specialize in a subject you must pass the mandatory requirements for each predefined specialisation proposed.

If you don't wish to specialize, you may choose the electives that interest you.

Action Learning Makers Project

Entrepreneurial Leadership Project (ELP)

Participants of the Full-time MBA need a tangible way within a real business setting to immediately put the academic knowledge they are acquiring into practice and gain practical experience to complement their existing skills. That's why they are required to undertake the Entrepreneurial Leadership Project (ELP).

This 6-month group project will allow you to choose a project topic or company in line with your professional goals, help a company solve a business problem that they are experiencing and discover the profession of consulting.

The companies and projects selected are carefully decided upon each year to match the needs and interests of the class. Previous project sponsors have been:

- Airbus
- Accor
- Adecco
- bioMérieux
- BNP Paribas
- Dassault Systemes
- EuroNews
- General Electric
- General Mills (Yoplait)
- LVMH
- Novartis
- Panzani
- Pepsico
- Plastic Omnium
- Renault Trucks

"Coming from the FMCG industry and with a background in finance, my ELP choice was quite strategic as I had for objective to get a job in marketing in the luxury industry after the MBA. My ELP project was spot on. Roger Dubuis – Swiss ultra-luxury watchmaker with a retail strategy oriented project was exactly what I needed. It opened the doors to a world I didn't know before. The ELP is not only about knowledge, but it is also about building professional connections and relationship with professionals from the organization you work for. I met my manager during our final presentation. I am currently in the position I imagined when I joined MBA, and here I am thanks to my ELP project."



Natalja Avramenko // Class of 2016
Digital Marketing and Social Media
Management // Roger Dubuis // Switzerland

Examples of additional 'Action Learning Projects' you will work on throughout the year:

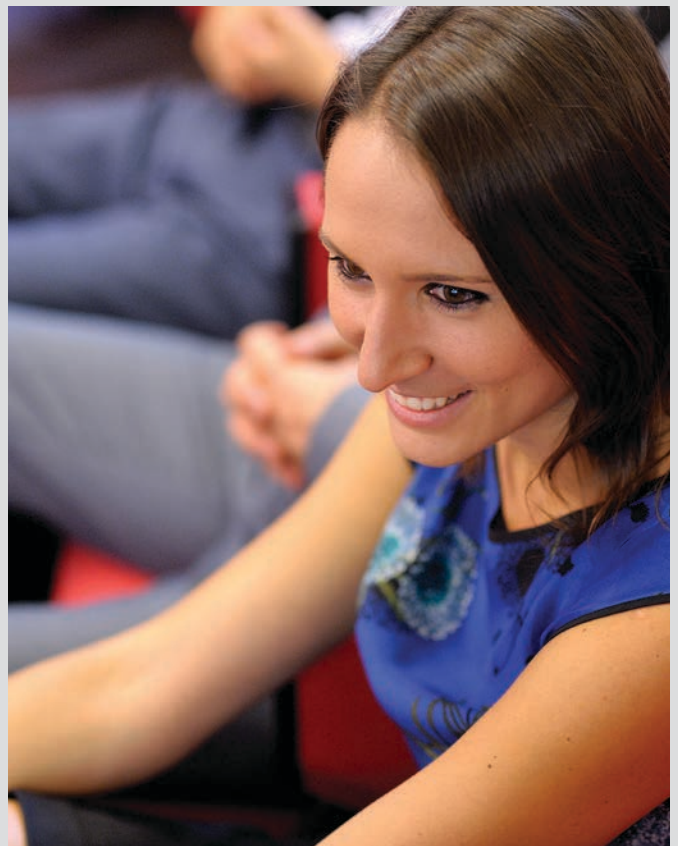
New Venture Project – work on your own or a classmate's start-up project and pitch your idea to a jury

Disruptive Trend Project – Work for a client to help them understand how future trends will impact their business through recommendations incorporating different stakeholder views and creating different possible futures

Integrative Seminar/Business 360 Degree Project – Interpret a company's accounts in relation to a particular strategy

Design Thinking Project – During your learning trip to Finland, you will work for 3 days in a Design Factory on a business idea

Corporate Social Responsibility Hackathon – Serve a client from a social enterprise (an NGO or governmental organization) by solving a problem they face



International Learning Trips Exchanges

Explore alternate business models with the learning trip and international exchanges

International Learning Trips

In addition to the high cultural diversity amongst the participants, **emlyon business school** offers students the opportunity to discover management styles of other countries and explore contextual factors through learning trips.

"In February 2019, I was able to visit South Africa. I met with local entrepreneurs who deal with challenges and find opportunities in a completely different environment from Europe. The budding entrepreneurship and desire to make a real social and economic difference is a model for any entrepreneur and socially-conscious business professional."

Andrew Wilson // United States of America // Class of 2019



"I learned that Sisu is the Finnish concept of the art of inner strength and how collaborative communities join to create something new, even when it seems crazy to do. This is the motto that inspires Finnish entrepreneurs and the business culture we lived during our week in Finland. We met with several start-ups and learned about their business models and also had a great time in a two day Design Thinking workshop developing new ideas, prototyping and pitching. We experienced the Polar Bear Pitching, where we had to sell our idea with our legs in a bucket full of ice! This pushed us to focus under a very uncomfortable situation! I believe this trip was one of the high points to develop our entrepreneurial skills during the MBA in a completely new environment."

Irene Jimenez // Costa Rica // Class of 2019



International exchanges

There are a number of international exchanges programs offered to the Full-time MBA students, allowing you to take management courses that will complement your studies at **emlyon business school** therefore increasing your value in the job marketplace. Exchange programs range from one week to five months and are run at different times of the year.

Examples of partner institutions:

- Argentina: IAE Business School
- Brazil: FIA Business School
- Canada: Queen's School of Business
- Chili: Pontificia Universidad Catolica de Chile
- China: Cheung Kong Graduate School of Business
- Great Britain: Lancaster University
- Italy: Politecnico di Milano
- Japan: KEIO University

"My exchange program was held in Beijing at The Cheung Kong Graduate Business School (CKGSB) which has in its alumni people like Hu Weiwei (MoBike) and Jack Ma (Ali Baba). I enrolled because I wanted to spend some time in what is considered to be the new Economic Eldorado - China and see how things are happening there. In just 2 months in China I learned more than I learned in some other countries over 2 years. I am very happy with the classes provided and highly recommend the CKGSB, most of the professors are full time professionals and will bring you relevant insight from their respective industries."

Georgi Bozhilov // Bulgaria // Class of 2017



"I chose to participate in a short-exchange at the MIP Politecnico di Milano to broaden my horizons and widen my network. The program allowed me to deepen my knowledge of business analytics, big data and artificial intelligence. Working with Microsoft, IBM and Reply, I learnt how artificial intelligence is contributing to generate new projects, services and companies. It was also a pleasure to meet the International MBA cohort from other schools!"

Hortense Kirisli // France // Class of 2019



Dedicated careers track

Throughout the year, every Tuesday is dedicated to career related events.

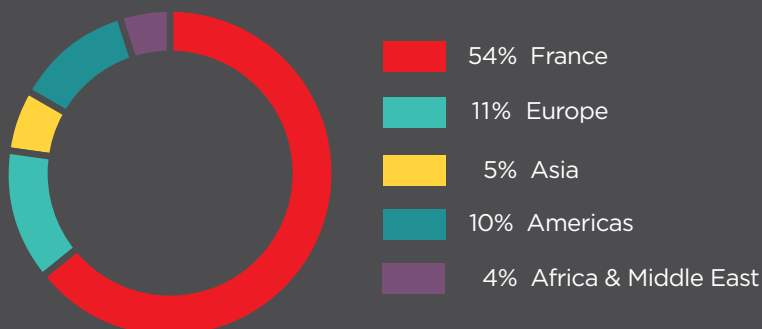
Some of the services that you will have access to are:

- Mentoring program
- Individual coaching by an alumni
- Regular career workshops on a variety of topics such as how to find a job in Europe for non-Europeans, how to network, how to develop your CV, interview skills, developing your career plan plus many more
- Career conferences and on-campus job fairs
- An online platform where you can see exclusive job offers, events and additional resources to develop your career plan
- **emlyon business school** networking events
- **emlyon business school** forever networking website

Where are they now? (average based on 2015, 2016, 2017 alumni)



Location (average based on 2015, 2016, 2017 alumni)



Alumni profiles

Adrien Bernier

French | Class of 2018

Previous job

Research Projects Engineer
Airbus Group
Toulouse

Current job

Experienced Consultant in Strategy & Management
Cylad Consulting
Paris

Pedro Souza

Brazil | Class of 2018

Previous job

Senior Business Analyst
Embraco
Brazil

Current job

Product Marketing Engineer
Plastic Omnium
France

Sarah Shakour

United States | Class of 2018

Previous job

Marketing Director
Metavine
The United States

Current job

Marketing Specialist
World Economic Forum
Switzerland

Yuan Liu

China | Class of 2018

Previous job

Credit Risk Manager
BOE Technology Group
China

Current job

Portfolio Manager
Olymp Capital
France

Pedro Henrique Prado

Brazil | Class of 2018

Previous job

Operations Venue Manager
The Coca-Cola Company
Brazil

Current job

Consultant
McKinsey & Company
Brazil

Kouadio Benjamin Sanou

Ivory Coast | Class of 2018

Previous job

Internal Auditor
CNPS Insurance Company
The Ivory Coast

Current job

Senior Consultant
Sychrone Technology
& Consulting
France

"After finishing my MBA I accepted a consulting position in the electric utility industry. I am based back in Los Angeles, but my consulting position could take me anywhere in the US. It is a great job and I was able to get roughly a 30% salary increase. I do however plan to return to France in the future, most likely Lyon. I plan to develop my career more and possibly move back to pursue a venture and become an entrepreneur."

-
Daniel Ortiz // United States // Class of 2018



"Once you get into emlyon business school you have to build your job finding strategy carefully. Choose your specialization and follow the advice of job searching provided by the career services team. Coming from Africa it can appear daunting for you to secure a job but emlyon has very strong branding in the mind of the international recruiters and this helps a lot."

-
Sanou Kouadio Benjamin // Ivory Coast // Class of 2018



emlyon business school forever alumni network

The strength of an international business school with powerful worldwide networks

350 events organised each year in **21** countries

ALUMNI NETWORK IN THE WORLD



32,000 graduates in **120** countries

"There is an emotional intelligence present throughout our alumni that unites and motivates us to support one of the most wonderful projects from this business school, the Forever Alumni Network. The strength of an alumni network is first and foremost based on the enjoyment of exchanging and meeting around the world. Every year, half of the 27,000 active alumni of emlyon business school participate in various ways to the Forever Alumni Network, whether it be through events, meetings or clubs. In 2018 we will refine our services, taking into account the diverse profiles, cultures and backgrounds of the members."



Guillaume Touze // Chairman emlyon business school forever alumni network



some long-standing recruit



connect with the corporate world

partners from emlyon business school



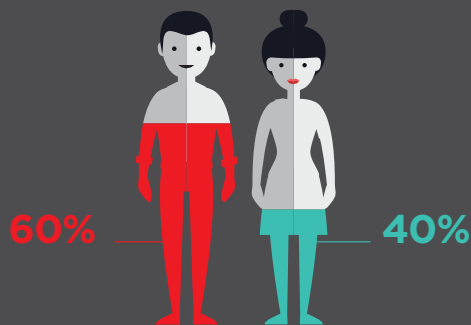
Class profile 2019-2020

60 participants

Average age: 29 years

Average work experience: 6.5 years

GENDER



EDUCATIONAL BACKGROUND



NATIONALITIES (30)

American • Angolan • Australian • Azerbaijani • Brazilian •
Cameroonian • Chilean • Chinese • Colombian • Costa Rican •
Egyptian • Filipino • French • Ghanaian • Guinean • Indian •
Italian • Japanese • Korean • Kyrgyz • Lebanese • Moroccan •
Mexican • Pakistani • Peruvian • Polish • Portuguese •
Russian • South African • Thai

- 56% STEM (science, technology, engineering, math)
- 32% Business (economics, accounting, management, communication)
- 12% Other (law, education, linguistics)

At **emlyon business school**, we aim to increase diversity on the International MBA program. Thanks to our scholarship program, we have reached a number of 40% of female participants in our next 2019-2020 class. But it's not just women who make up diversity in the MBA classroom, as **emlyon business school** also offers scholarships to students who are the first of their nationality to apply. We are expecting 30 nationalities in the next cohort from September.

Admission

Requirements

- **Minimum of a Bachelor's Degree**
Bachelor Degrees from all fields are accepted.
- **Minimum 3 years of work experience**
The work experience must be full-time and gained after graduation. The years spent completing a PhD also count as work experience.
- English proficiency test for non-native speakers
- Official Management Aptitude Test score

Supporting Documents

- **English Proficiency Score**
 - TOEFL - Minimum score of 90. You can send your score directly to us: Program Number 0357
 - IELTS - minimum score of 6.5
 - TOEIC - minimum score of 850
 - Cambridge

Please note that your English Proficiency Score is valid for 2 years

You may be exempted from taking an English Proficiency Test in the following cases:

- Your mother tongue is English
- You hold a non-French degree from a program fully taught in English
- If you have spent one academic year in a program fully taught in English
- Applicants who have a minimum of three years of work experience in English

We reserve the right to require an English test after your interview.

- **Official Management Aptitude Test Score**
 - GMAT (our code MBW-FX-70)
 - GRE (our code 0761)
 - TAGE MAGE

Important Information:

- We do not have a minimum test score requirement. Your whole application is taken into account.
- You may apply even if you have not taken the GMAT/GRE/TAGE MAGE test yet. You can communicate your score at a later date.
- An exemption from a Management Aptitude test is possible but only under specific conditions. Please contact the Recruitment Manager for further information.

• Your updated CV

• A copy of an official valid Identity Card or Passport

• A certified copy of your most recent academic degree

We require your academic degrees to be translated into English or French.

• 120€ non-refundable application fee

17 This payment can be made online. For other payment options please contact the Recruitment Manager.

Application process

1. Start your Online Application

Start your application through our Online Application portal which you will find on our website.

<http://graduate.em-lyon.com/account/create/International-MBA/apply>

Here you will complete information on your academic and professional background as well as motivations behind joining the MBA.

You are also asked to attach your supporting documents.

2. Record your video

You are asked to record a video of yourself using the online platform easyRECrue.

Your video will be submitted to the jury directly.

The jury members will evaluate your video and send their feedback to the Admission Board. Should the jury have further questions, you may be asked for a face-to-face or Skype interview.

3. Admission Board

After filling out your online application and recording your video using easyRECrue, the Admission Board will review your application.

From then on, there are four possible outcomes:

- Admitted
- Admitted Under Condition
- You are invited to a face to face or Skype interview
- Non Admitted

Scholarships

As a socially responsible organization, emlyon business school provides a guaranteed scholarship support fund to help qualifying students pursue their education. If a candidate of the Full-time MBA program falls under one of the guaranteed scholarship categories, the scholarship will be automatically awarded.

Guaranteed scholarships

It is not necessary to make a specific financial aid request - simply complete the declaration of honor form and attach it, with relevant proof, to the application. The selection committee will then award scholarships automatically according to the candidate's profile.

Please note, guaranteed scholarships cannot be accumulated, but if several categories are applicable to the individual's situation, they will be granted the highest percentage.

Guaranteed scholarships

Excellence scholarship – 30%

- A scholarship of 30% is granted to candidates with a GMAT score of over 650

First nationality scholarship – 20%

- A scholarship of 20% is granted to the first participant of each nationality

Executive woman scholarship – 20%

- A scholarship of 20% is granted to women

Early bird scholarship – 20%

- A scholarship of 20% is granted to candidates who apply before the end of December 2018 for the September 2019 intake

Alumni recommendation – 10%

- An additional 10% reduction in tuition fees is granted if the candidate is recommended by an alumnus or alumna of an MBA program of emlyon business school. The candidate must know this alumnus either personally or professionally



Follow

Additional ways to finance your MBA at emlyon business school

The French embassy

The French embassy or the French cultural service may offer individual scholarships for students who want to pursue their studies in France. Contact your local French Embassy for individual scholarships that are available.

www.diplomatie.gouv.fr

Prodigy Finance

An innovative platform that offers loans to international postgraduate students attending top universities. Through their community platform, alumni, impact investors, and other private qualified entities invest in tomorrow's leaders whilst earning a financial and social return.

USA Federal Loans

emlyon business school is registered with the US Department of Education. emlyon business school students (US citizens or permanent residents) can be eligible to apply for Federal Direct Loans. These loans can help you cover the cost of your studies.

Bank loans

You may obtain a bank loan through emlyon business school financial partners (LCL, Caisse d'Epargne and Société Générale, bank branches in Ecully, France) if you are French or have a French guarantor. If not, we advise you to obtain a loan in your country of origin before your arrival.

If you wish to obtain a contact list of the partner banks, please contact the Recruitment Manager.

Financial aids according to your country

Each country has a number of scholarships funded by the government, public institutions or private actors. We recommend that you research the available funding options for individuals of your nationality or ask the Recruitment Manager for more information.

Campus France also offers useful information on their website. <http://www.campusfrance.org/>

Introducing Lyon

Lyon, a global city

-

Lyon stands within Europe's sixth-largest region. It is one of the most attractive cities for European investors and is home to more international companies than any other region in France. This university city, with a student population of 150,000, also hosts a number of corporate head offices and international organisations (Interpol, Euronews, etc.). The city boasts recognized expertise and competitiveness clusters in the following sectors: biotech and healthcare, environment and digital entertainment (video games, cinema, audiovisual, animation and interactive multimedia). Lyon's history dates back 2,000 years.

Lyon, a vibrant place to live and create

-

The city is home to a UNESCO World Heritage Site, is one of Europe's top five tourist destinations and is known for its gastronomy, with no fewer than 15 Michelin-starred restaurants. It boasts the perfect location for student living, near the French Riviera and the Alps and just 2 hours from Paris by high-speed rail. Lyon offers a wide range of activities and cultural events, including Les Nuits Sonores (electronic music festival), the Fête des Lumières (December lights festival), Les Nuits de Fourvière (culture, concerts, etc.), the Biennale de la Danse and the Biennale d'Art Contemporain. Living in Lyon brings all these things to your doorstep.

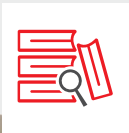
www.onlylyon.org

Lyon-Ecully

campus

The business school's historical campus is situated in pleasant, rural surroundings just 15 minutes from the centre of Lyon in the town of Ecully. The buildings, located in a large 15-acre park, provide 30,000 m2 of office and teaching space.

In line with the Business School's digitalization strategy, this space is under transformation, notably with the opening of the learning hub in 2015 and the 45/4 space. In 2016, the installation of the new incubator and makers' lab, in the heart of the campus, became the first ever creativity & learning hub in Europe. Two halls of residence - the Drakkar and the Galion - house over 300 rooms and studio apartments.



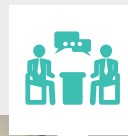
Learning Hub



IBM Hall



Makers' Lab



Cafeteria 45.4

makerslab.em-lyon.com
learninghub.em-lyon.com

A triple accredited business school



emlyon business school belongs to the 1% of Business Schools in the world which have the triple accreditation - AACSB, EQUIS & AMBA. emlyon business school is also one of 11 French business schools with the Triple Crown. The Triple Crown guarantees that your business education meets the highest standards, measured against the world's best business schools.

Students and participants

emlyon business school trains 5,750 students including 40% from abroad (83 nationalities) and 5,500 company managers in continuous professional development programs.

A world class international faculty. Spotlight on MBA professors

emlyon business school professors all have very close links to the world of business. For example, many of them are involved in consultancy for companies and/or governments which allows them to be in close contact with the reality of business.

Fabienne Autier

- Professor of HR, Associate Dean for Faculty
- Ph.D in management, HEC Paris
- French



Véronique Bouchard

- Professor of strategic management
- Ph.D in management sciences and MBA, Wharton School
- Canadian



Virginia Drummond

- Professor of management
- Ph.D in management, University Paris Dauphine
- Brazilian



Zied Guedri

- Professor of strategy
- Ph.D in strategic management, Concordia University
- Tunisian



Pascal Langevin

- Professor of management accounting
- Ph.D in Management, Aix-Marseille III University
- French



Paul Millier

- Professor of marketing and management
- Ph.D in Management, Lyon III University
- French



Rickie Moore

- Professor of entrepreneurship
- Ph.D in Management, Lyon III University
- American



Agathe Potel

- Professor of leadership and personal development
- Ph.D in management, Sorbonne University
- French



Hans-Jörg Schlierer

- Professor of negotiation and intercultural management
- Ph.D in intercultural communication, University of Saarbrücken
- German



Philippe Silberzahn

- Professor of strategy specialized in innovation and entrepreneurship
- Ph.D, Ecole Polytechnique and MBA, London Business School
- French



Bruno Versaevel

- Professor of economics
- Ph.D in Economics, European University Institute (Italy)
- French



Handan Vicdan

- Professor of marketing
- Ph.D in Business administration with concentration on marketing, University of Texas
- Turkish



90%

of our MBA participants
find a job within 3 months
after graduation

"I was positively surprised by the intensity of the program. You learn so much in such a short period."

-
Laurent Berro // Lebanon graduate in 2015 // Senior consultant Greyspark Partners, London



"My year was memorable and I really enjoyed every class, project and day."

-
Ole Rødland // Norwegian graduate in 2014 // Senior Consultant Accenture Strategy M&A



snapshot

At a glance

Duration: 12 months full-time

A mandatory career track: every Tuesday (from October to January) is dedicated to careers

Course language: English

Intake: September

Campus: Lyon + learning trip + international exchange opportunities

Cohort size: around 40 people, more than 20 nationalities

Tuition fee

Tuition fees: 38,500 €

Application fees: 120 €

Indicated tuition fees include administration fees and a lifelong membership at emlyon forever. Extension of studies beyond the official length of the program is subject to payment of 500 € administration fees per year.

Admission requirements

University degree (minimum of a Bachelor's Degree or equivalent)

Minimum work experience of 3 years

GMAT, GRE or TAGE MAGE - possible exemption

English Proficiency Test score (TOEIC, TOEFL, IELTS)

The Application & Selection Process

Selecting the right participant is more than just test scores. At **emlyon business school** we take an applicant's entire potential into account. Motivation and background are equally important. Our online application procedure is available from November onward.

Contacts

Jacques Marino
marino@eml-executive.com
+33 (0)4 72 18 68 16

Joniko Cao (candidates from Asia)
cao@em-lyon.com
+86 (21) 6260 8160 * 814

emlyon business school CAMPUSES

LYON-ECULLY

23 avenue Guy de Collongue
CS 40203
69134 Ecully cedex - FRANCE
em-lyon.com

SHANGHAI

Asia Europe Business School
155 Tan Jia Tang Road
Minhang District
Shanghai 201199 - PEOPLE'S REPUBLIC OF CHINA
www.em-lyon.com.cn

SAINT-ETIENNE

51 cours Fauriel
CS 80029
42009 Saint-Etienne cedex 2 - FRANCE
bba.em-lyon.com

CASABLANCA

Marina de Casablanca
Tour Ivoire 4
20000 Casablanca - MOROCCO
casablanca.em-lyon.com

PARIS

15 boulevard Diderot
75012 Paris - FRANCE
paris.em-lyon.com

BHUBANESWAR

Xavier City Campus
Plot No:12(A) - Nijigada - Kurki - Harirajpur
Pin: 752050 - Dist.-Puri - Odisha - INDIA
xebs.edu.in

 Visit our campuses on google street view

@emlyon



Continuing education offered by

